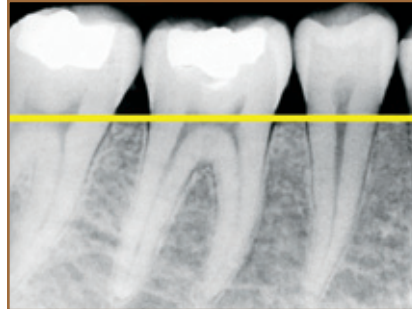


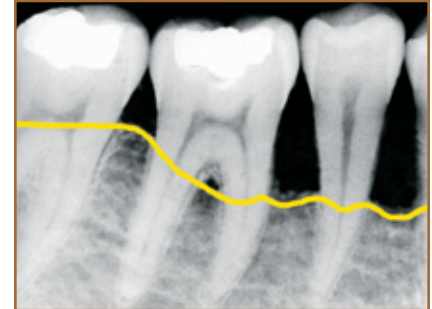
Considering Extraction due to

Periodontitis

When too much bone around a tooth has been lost due to severe periodontal disease (also called periodontitis), sometimes the best treatment is to remove the tooth to maintain the health of your mouth.



Healthy bone levels



Low and uneven bone levels

Periodontal disease causes bone loss

Teeth are held in place by the height and shape of the jawbone, but when teeth and gums are infected by the bacteria that cause periodontal disease, the disease process begins to destroy the bone that surrounds the teeth.

Left untreated, periodontal disease destroys so much bone that there's not enough support for the teeth. In severe cases, the teeth become very loose and cannot be saved.

Diagnosis and treatment

To determine if an extraction is right for your situation, we'll do a thorough examination, which typically includes x-rays. In advanced gum disease, sometimes called periodontitis, x-rays show us low and uneven bone levels around the teeth. The condition is especially obvious when compared to x-rays of a healthy mouth, in which the bone comes up high around the necks of the teeth.

Many times we can save teeth. Aggressive periodontal therapy, frequent periodontal maintenance appointments in our office, and consistent homecare can halt the progression of periodontal disease and stop the bone loss. Sometimes we also recommend periodontal surgery to save teeth.

However, if your teeth continue to loosen and the destruction persists, our only option will be to remove the affected tooth. It's important to extract a tooth that cannot be saved as soon as possible to prevent the spread of infection.

We often recommend replacing an extracted tooth to preserve remaining jawbone and stabilize your bite, so we'll talk with you about your replacement options.